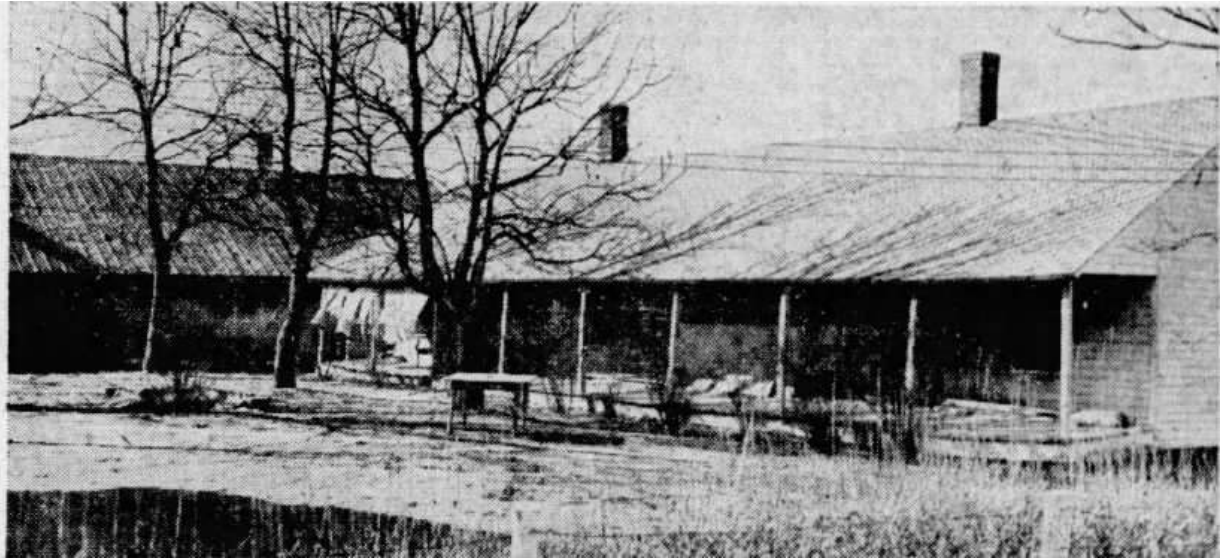


Daviess County Poor Farm Cemetery

By Jerry Long



Daviess County Poor Farm – from the Owensboro Messenger, 17 February 1946, p.1B



On 11 December 1848 the Daviess County Court purchased land for a county poor farm to care for and house indigents of the county. One hundred seventy acres about five miles southeast of Owensboro, on the Miller's Mill Road, was purchased from Simpson Stout (Daviess County Deed Book I, page 239). A burial ground for those buried by the Daviess County Court was established on the farm. No records of burials there was kept. It is unknown how many were buried there – possibly in the hundreds.

In 1912 the Daviess County Poor Farm was renamed the Daviess County Infirmary. The Daviess County Infirmary continued until it was closed in 1956. The grounds were acquired by the Windridge County Club, who opened a golf course and country club there in 1957. The Daviess County Court sold the remaining 106.11 acres of the Poor Farm, on Miller's Mill Road, to the Windridge County Club on 21 January 1958 (Daviess County Deed Book 272, pages 27-28). The deed contained the clause "Party of the second part is not to disturb a graveyard now located on said premises." The graves on the farm were never moved and remain under the 10th and 17th tees of the golf course.

See article, “Daviness County Poor Farm”, by Jerry Long, on Website: West-Central Kentucky History & Genealogy (<https://wckyhistory-genealogy.org/>).



Windridge Country Club (Golf Course), 5044 Millers Mill Road, Daviess County, KY, opened in 1957. The Daviess County Poor Farm graveyard lies above the pond between the 10th and 17th tees of the golf course. Millers Mill Road is off on the left.



The following 52 burials in the graveyard on the Daviess County Poor Farm were documented from the Owensboro, KY newspapers and the Kentucky Death Certificates (1911-1956, on Ancestry.com). The few scattered Kentucky death records prior to 1911 do not record the place of interment. Prior to the 1940’s the vast majority of deaths in the county were not published in the Owensboro newspapers.

- | | | |
|---|------|-------------|
| Armstrong, Charley
(Owensboro Messenger, Owensboro, KY, 3 November 1925, p.9
and Kentucky death certificate 1926 - #3551) | 1869 | 1 Nov 1925 |
| ? Borman, John
(Kentucky death certificate 1916 - #12615) | | 26 May 1916 |

Clark, James	c 1848	5 Apr 1926
(Owensboro Messenger, Owensboro, KY, 6 April 1926, p.5 and Kentucky death certificate 1926 - #9358)		
Clements, Jenny		13 Aug 1916
(Black; Kentucky death certificate 1916 - #20259)		
Conyers, Reuben	c 1847	18 Apr 1930
(Black; Kentucky death certificate 1930 - #13732)		
Cooney, Bill		3 Aug 1899
(Owensboro Messenger, Owensboro, KY, 10 August 1899, p.2)		
? Coons, Martha		17 Aug 1917
(Kentucky death certificate 1917 - #21873)		
Driskell, Fenora Elizabeth		25 Mar 1926
(Owensboro Messenger, Owensboro, KY, 26 March 1926, p.7 and Kentucky death certificate 1926 - #9357)		
Foots, Polly	c 1851	29 Aug 1936
(Black; Kentucky death certificate 1936 - #21309)		
Galloway, William	c 1862	13 Aug 1926
(Owensboro Inquirer, Owensboro, KY, 15 August 1926, p.10 and Kentucky death certificate 1926 - #24873)		
Gootee, James Horace	10 Jun 1850	27 Feb 1931
(Kentucky death certificate 1931 - #11719)		
Graepel, Mr.		Sep 1900
(Owensboro Messenger, Owensboro, KY, 14 September 1900, p.4)		
Greentree, Elizabeth A. (Cheshire)	Mar 1837	10 Jun 1916
(Kentucky death certificate 1916 - #15005)		
Hall, John	c 1855	12 Jan 1942
(Kentucky death certificate 1942 - #542)		
Henning, Mary	c 1824	24 Jul 1912
(Kentucky death certificate 1912 - #16844)		
Hicks, Willis C.	1851	1 Nov 1925
(Owensboro Messenger, Owensboro, KY, 3 November 1925 p.9 and Kentucky death certificate 1926 - #3549)		
Hinton, Jane		5 Sep 1917
(Kentucky death certificate 1917 - #24616)		

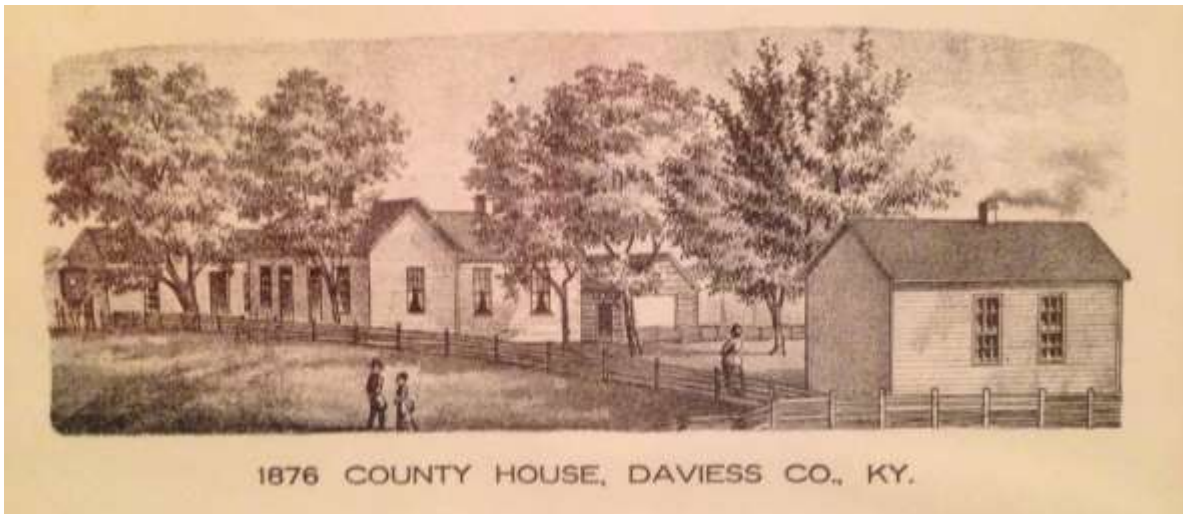
Hulsey, Thomas (Kentucky death certificate 1918 - #15184)	c 1848	16 Jun 1918
Humphrey, Margaret Ellen (Douthitt) (Kentucky death certificate 1918 - #15183)	Nov 1840	5 Jun 1918
Hunter, Mary (Black; <u>Owensboro Messenger</u> , Owensboro, KY, 21 December 1927, p.5 and Kentucky death certificate 1928 - #609)		18 Dec 1927
Jarvis, John W. (Kentucky death certificate 1923 - #13068)	c 1849	16 May 1923
Jones, Richard (Kentucky death certificate 1927 - #5505)	c 1862	12 Mar 1927
Jones, Thomas (Kentucky death certificate 1930 - #16346)	c 1865	5 Jul 1930
Kindle, William (Kentucky death certificate 1918 - #679)	c 1834	1 Jan 1918
Leaman, James (Kentucky death certificate 1927 - #5506)	c 1852	18 Jan 1927
Leet, James Dock (Kentucky death certificate 1923 - #774)	Feb 1853	3 Jan 1923
Long, Richard M. Johnson, 'Jons' (<u>Owensboro Messenger</u> , Owensboro, KY, 8 December 1914, p.5 and Kentucky death certificate 1915 - #2884) [He is a brother of this writer's great-grandfather, John Howard Long.]	Feb 1856	7 Dec 1914
McCallister, William (<u>Owensboro Messenger</u> , Owensboro, KY, 17 April 1926, p.3 and Kentucky death certificate 1926 - #12336)	c 1857	15 Apr 1926
McKelly, Jack (Black; Kentucky death certificate 1914 - #3837)		15 Feb 1914
McKinley, Joe (Kentucky death certificate 1930 - #3304)	c 1865	9 Feb 1930
Miller, Elisha L. (Kentucky death certificate 1942 - #17600)	26 Apr 1856	28 Aug 1942
Montague, John J.	24 Jan 1835	3 Feb 1924

(Owensboro Messenger, Owensboro, KY, 12 February 1924, p.12
and Kentucky death certificate 1924 - #3183)

Morris, Jes (or Jeff) "Peg Leg" (Black; <u>Owensboro Messenger</u> , Owensboro, KY, 31 January 1900, p.5 and <u>Owensboro Inquirer</u> , 2 February 1900, p.4)		29 Jan 1900
Nelson, Robert (<u>Owensboro Messenger</u> , Owensboro, KY, 15 December 1948, p.2 and Kentucky death certificate 1948 - #24791)	2 Jul 1866	14 Dec 1948
Newton, Ben (Black: Kentucky death certificate 1916 - #12611)		16 May 1916
Patterson, Jess (Kentucky death certificate 1925 - #23677)	1893	14 Oct 1925
Phillips, George (Kentucky death certificate 1922 - #19587)	c 1845	1 Sep 1922
Pinson, William (Kentucky death certificate 1918 - #25741)	c 1884	16 Oct 1918
Porter, Tom (Black; Kentucky death certificate 1928 - #16885)		27 Jul 1928
Railey, Henry (Kentucky death certificate 1943 - #10553)	c 1884	3 Apr 1943
Rogers, James (Kentucky death certificate 1916 - #27646)		20 Nov 1916
Schindle, Louis (Kentucky death certificate 1937 - #25417)	c 1846	7 Aug 1937
Shoat, Gano (Black; Kentucky death certificate 1923 - #30011)	c 1855	8 Dec 1923
Simmons, Elmore (Kentucky death certificate 1942 - #17598)	c 1871	25 Aug 1942
Skillman, William R. (Kentucky death certificate 1932 - #28288)	c 1854	22 Dec 1932
Smith, Jess (Black; Kentucky death certificate 1919 - #20539)	c 1867	20 May 1919
Smith, Rosie Lee	c 1879	20 Feb 1929

(Black; Kentucky death certificate 1929 - #8712)

Sparks, James (Kentucky death certificate 1923 - #4014)	c 1847	1 Feb 1923
Talbott, Mercer (Kentucky death certificate 1925 - #8814)	c 1848	8 Apr 1925
Whitney, Charlotte (Driscoll) (Kentucky death certificate 1916 - #921)	Dec 1846	9 Jan 1916
Wiggins, Edwin R. (Kentucky death certificate 1926 - #9359)	c 1848	13 Apr 1926
Wilborn, Haly (Black; Kentucky death certificate 1915 - #3645)	c 1858	17 Feb 1915



Picture from the book, An Illustrated Historical Atlas Map of Daviess County, KY. (Leo McDonough & Co., 1876, p.19)

