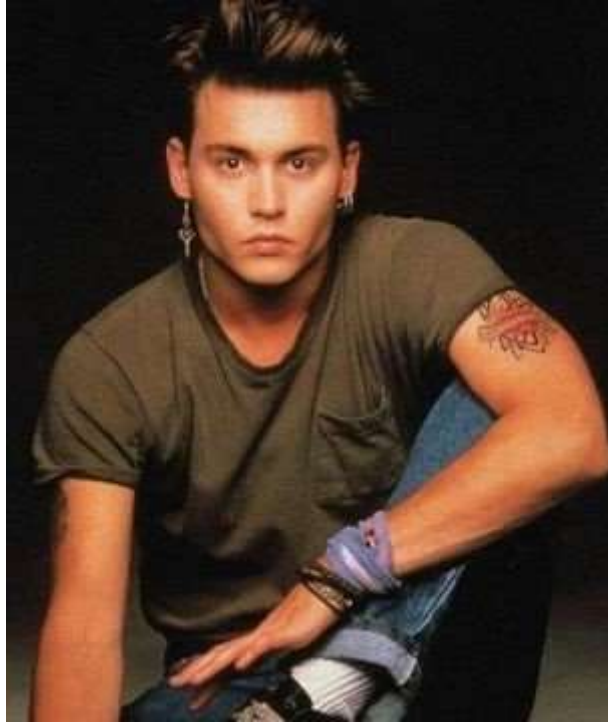


Johnny Depp: Owensboro Connections

By Jerry Long
c.2024



Johnny Depp



Daviess County, Kentucky Celebrating Our Heritage, 1815-2015
(Evansville, IN, M. T. Publishing Company, Inc., 2015):

page 16 – “Daviess County Bicentennial Chronology – 200 Historical Events,” by Jerry Long (compiled in celebration of Daviess County’s Bicentennial):

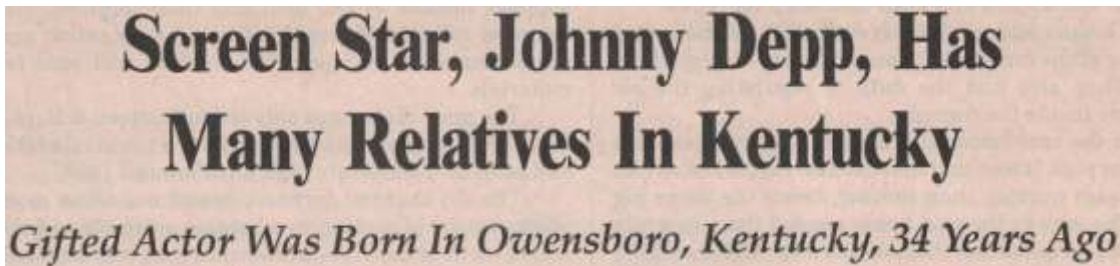
1963, 6-9 John (Johnny) Christopher Depp, box office star of TV and Movies, was born at Our Lady of Mercy Hospital in Owensboro. His parents, John Christopher & Betty Sue Depp, were at the time residing at 518 Stockton Drive in Owensboro.

Chapter 14: “Arts & Culture in Daviess County”, by Tracey McQueen, page 152 – Daviess County has been home to numerous famous actors, artists and authors in its 200-year history, including the following:

... Johnny Depp (born in 1963) is an Owensboro native and popular movie star, best known for portrayals of offbeat and eccentric characters. Some of Depp's memorable performances include *Edward Scissorhands*, *Charlie and the Chocolate Factory*, *Finding Neverland*, and the wildly popular *Pirates of the Caribbean* movies. The film *Sweeney Todd* won him a Golden Globe award for Best Actor in a Musical or Comedy.



The Kentucky Explorer, Jackson, KY, July-August, 1997, pp.38-39:



By Warder Harrison - 1997



Johnny Depp has many relatives in Daviess and Barren Counties. (Author's Photo)

John Christopher Depp II, known to his legion of fans as Johnny Depp, was born June 9, 1963, in Owensboro, Kentucky, to Kentuckians John C. and Betty Sue (Wells) Depp. Like his silver screen contemporary, Tom Cruise, Depp's ancestors were some of the earliest and most prominent settlers of Kentucky. His great-great-grandfather, John Burks Depp, was born in Metcalfe County in 1845, and his wife, Mariba Reneau, was born in Clinton County, her forefathers being quite notable and influential French Huguenots. John Burks Depp was elected to the Kentucky State Legislature as a representative from Barren County for one term in 1896. Depp's great-grandfather, Richard T. Oren Depp (called Oren), was born in Barren County in 1879,

and became a school teacher at Hiseville, Kentucky, in 1899. He died at the age of 32 leaving behind his wife, the former Effie America Palmore (daughter of Andrew Palmore), and five children: Oren Larimore who married Violet Grinstead (They would become Johnny Depp's grandparents.), Thelma Lenette who married Earl Amos, Tipton Ellsworth (single), Lennis Elizabeth who married Frank B. Wells, and Oren Richard Palmore who married Alma -. Many of these people are buried in the Refuge Church Cemetery at Eighty-Eight, Kentucky. Johnny Depp's sultry, dark, good looks can be attributed to his French Huguenot bloodline, as well as his Cherokee Indian bloodline on his mother's side. Unfortunately, at this time, I have no genealogical information on his mother's side other than she was born in Prestonsburg, Kentucky, in 1935, and remarried to a man named Palmer.

Johnny's family moved to Miramar, Florida, when he was seven years old. However, to this day (except for his father), most of his relatives live in Barren County and Owensboro, Kentucky. While growing up in Florida, Johnny dreamt of being a rock 'n' roll star, and during his high school years, he and his friends formed a band called "The Kids." After graduation, these "kids" pooled what little resources they had and headed west to Los Angeles. It was 1983, and Depp and his buddies were ready for the big time. Soon, reality set in, and the kids began taking what jobs they could find in order to survive. At one point Johnny sold pens over the phone. Then, in 1984, fate laid its guiding hand on I Depp's shoulder when a friend introduced him to actor Nicholas Cage. Cage had heard Depp's band and liked their style, but he also knew good rock bands were a dime a dozen in L.A., so he asked Depp if he had ever thought about acting. His reply was negative. Finally, convinced by Cage, who set up an interview with his agent, Depp read for a role in *A Nightmare on Elm Street*, and five hours later he was hired. His next acting engagement took place in the 1985 film *Private Resort*, followed by the Academy Award winning film *Platoon* in 1986, which proved to be the vehicle to send Depp to the top of his profession. Two months after *Platoon* was released Depp auditioned for the role of Tom Hanson on the prime-time TV action drama series *21 Jump Street*, and won. Ironically, Depp's great-great-great-great-grandmother was Mary Hanson Courts, who married Peter Depp, a Virginian. During this long-running series Johnny became a fast contender against Tom Cruise as being America's #1 heart-throb.

In 1989, Depp made his silver screen debut as the star of a film written especially for him by film-maker, John Waters, entitled *Cry Baby*, co-starring talk-show host, Ricky Lake, Polly Bergen, Troy Donahue, Joey Heatherton, and Patty Hearst (the newspaper heiress who spent time in prison). This same year he appeared on the cover of *US*, with a 5-page biographical spread inside, as well as on the cover of *TV Guide*. The following year Johnny along with his then fiancée, Winona Ryder, were voted Stars of Tomorrow in Las Vegas. Although Depp and Ryder never married, Johnny still carries her name just above his mother's in the form of a tattoo on his right arm. This same year his starring role in *Edward Scissorhands* was released to rave reviews cutting his name in stone for all-time as one of Hollywood's top leading male actors.

In 1991 his star status was further proclaimed by a 3-page biographical entry in the *Current Biography Yearbook*. Initiated in off-beat character roles with *Cry Baby* and *Edward Scissorhands*, Depp continued in this genre with *The Arrowtooth Waltz (Arizona Dream)*, *Benny & Joon*, *What's Eating Gilbert Grape?*, *Ed Wood*, and *Don Juan De Marco*, with Marion Brando, who agreed to be Depp's best man when he finally ties the knot.

Depp still owns the Hollywood nightclub called the Viper Room where actor, River Phoenix, died from an overdose of drugs. After witnessing his friend's death in 1993, and a heart scare in 1995, Depp sought help for his own drug and alcohol abuse. This same year he purchased

a \$950,000, 43-acre, Lexington, Kentucky, horse farm for his mother where she will live permanently. Ms. Palmer owns a horse, and the property has an eight-stall horse barn, but she is not in the horse business. Johnny, who lives in a \$2.3 million mansion near Hollywood's Sunset Strip formerly owned by deceased actor, Bela Lugosi (best remembered for his portrayal of Dracula and being buried in his Dracula costume after his death), visits his mother often.

For those interested in further details regarding the Depp genealogy I refer you to the booklet *Nettie Bayless Courts Depp "Miss Nettie,"* by Wm. Samuel Terry IV, Rt., 1, Box 272A, Cave City, KY 42127. No bookstore will have this booklet, but perhaps your library will. There is a copy at the Filson Club in Louisville. In their card catalogue, look under Depp.

Warder Harrison, 115 South 4th Street (Utica) Jeffersonville, Indiana 47130, phone 812-282-5132, writer and genealogist, is the author of *"I Didn't Know That! (Kentucky's Ties to the Stage and Screen)."* This interesting book is available from him for \$14.95, plus \$2.00 p&h.



The Depp family's connection to Owensboro began in 1936 when Johnny Depp's grandfather, Oren Laramore ('Larry') Depp (1905-1979), moved his family to Owensboro. He made the move after he had received an appointment as WPA Area Engineer for Daviess, Hancock and McLean counties. Oren, the son of Oren Richard Depp (1879-1912) & Effie America Palmore (1880-1962), was born 28 January 1905 in Barren County, KY. He is listed in the 1910 & 1920 censuses of Barren County. In 1930 Oren married Violet Mattie Grinstead. She was the daughter of Robert Fauntleroy Grinstead & Mary Edna Bailey and was born 30 March 1907 in Barren County, KY.



Owensboro: The City on the Yellow Banks, Lee A. & Aloma W. Dew,
Rivendell Publications, Bowling Green, KY, 1988:

(pp.155-156) – The WPA was created by President Roosevelt by Executive Order on May 6, 1935 with the announced purpose “to move from the relief rolls... the maximum number of persons in the shortest time possible.” Oren Larry Depp, Sr., was appointed WPA Area Engineer for Daviess, Hancock and McLean counties, coordinating proposals and gaining approval for funding for the many WPA projects that were proposed for the area.

(p.230) – Johnson, Depp and Quisenberry

In 1986, the consulting engineer firm of Johnson, Depp and Quisenberry marked fifty years of steady growth and a constantly spreading practice in the field of civil engineering. For most of those years, Johnson, Depp and Quisenberry has been a multi-state operation.

A considerable portion of their work is concentrated in Owensboro and Daviess County. It is almost impossible to enter this city without using transportation surfaces designed, supervised, and/or inspected by Johnson, Depp and Quisenberry.

J. Sam Johnson began surveying in 1936, armed with an unshakable faith in the future and \$1,800 worth of equipment. At about that same time, the "New Deal" agency, or W.P.A., offered employment for millions in various public projects including parks, streets and highways. In order to design and construct such projects many engineers worked as either direct employees of W.P.A.

or as contracting engineers. Johnson was soon involved with design and construction supervision. That work introduced him to his first two partners, Oren Larry Depp and Everett "Quiz" Quisenberry, who were both W.P.A. supervisory engineers.

Depp was the area engineer for W.P.A. in 1937, heading the Owensboro area office. From 1942 to 1945, he served as an officer in the 836th Aviation Engineering Battalion, building airports for American expeditionary forces invading and occupying islands in the South Pacific, often under enemy fire. His military service completed in 1945, Depp returned to Owensboro and entered into partnership with Johnson. Three years later, Depp launched his own construction contracting firm, O. L. Depp, Incorporated, but retained his interest in Johnson and Depp for ultimate purchase by his son, Larry Depp, Jr., who is the firm's current president.

In 1946, the firm moved from the Damron Building to larger offices at 521 Frederica Street (now occupied by the Campbell Club).

Shortly after the move, the firm's third partner was welcomed. Quisenberry, a Livermore native, had been a W.P.A. area engineer at Henderson where his projects included the construction of Audubon Park. He became secretary of the firm in 1949, making it Johnson, Depp and Quisenberry, Incorporated.

By 1951, George S. Hagan, Jr., J. G. Riney, and William Haley became stockholders. Hagan was employed by the firm in 1946 and became director of municipal engineering projects for sewers, sewage disposal plants and water works. Riney, with extensive survey and construction experience in the South Pacific war zone, started as a surveyor, and moved to survey party chief and director of field surveys. Haley, a part-time employee of Johnson in 1938, returned in 1949. He assumed supervision of highway design and later became a director and vice president.

As the firm continued to grow, a larger office was called for. Johnson, Depp and Quisenberry moved to their present site at 2625 Frederica Street in 1958. The warehouse behind the building was completed in 1963 and houses the testing laboratory.

Quisenberry's two sons, Robert and James joined the firm in 1959 and 1960, respectively. Robert became director of the bridge department and a stockholder in 1967. Brother James became a stockholder in 1965. Both brothers brought much outside experience to the firm, as Robert was a civil engineer and James had spent four years working for a Venezuelan petroleum company.

The combined experience of its engineers allowed the firm to secure a lion's share of highway construction programs for over thirty years. With over a thousand miles of highway engineering under its belt, that work continues to thrive.

In 1970, both Quisenberry and Johnson retired. Quisenberry's interest had been divided between sons, James and Robert. Johnson's interest was partially acquired by three long term and highly valued employees, John E. O'Brien, William B. West and Paul G. Price.

Also with the founders' retirements, Larry Depp, Jr. became president of the firm, with Haley as vice-president and James Quisenberry was made secretary/treasurer.

In 1979, Vice-president Haley retired. His stock was absorbed by the company. The changing of the ranks made, Robert Quisenberry, O'Brien, West, Riney and Hagan became vice-presidents.

Another vice-president, Morris Guthrie, was added in 1982. Guthrie joined the firm in 1949 with duties in field construction engineering on highways and municipal utilities projects.

Hagan's retirement came in 1985 after a long career of valued service. Hagan is well known throughout the state in engineering circles, having been president of the Kentucky Society of Professional Engineers. He is equally recognized by municipal officials over much of the state.

Riney retired just three months later after a long a capable work history.

All engineers identified herein have long been registered professional engineers as have several other employees, both past and present.

In addition to Hagan, the firm provided three other presidents to the Kentucky Society of Professional Engineers including J. Sam Johnson and the unique father and son combination of O. L. Depp, Sr. and Larry Depp, Jr.

This company continues, under its current leadership, to adhere steadfastly to the professional integrity and high business standards established by its founders.

[Note – Oren L. Depp, Sr. (1905-1979) was the grandfather of Johnny Depp, and Oren L. Depp, Jr. (1931-2000) was his uncle.]



Owensboro Messenger, Owensboro, KY, Sunday, 22 November 1936, p.5A:

Larry Depp who has been here for several weeks with the WPA is to be transferred to Marion as area engineer.

Messenger-Inquirer, Owensboro, KY, Sunday, 17 January 1937, p.3B:

MORE THAN 600 PERSONS WORKING ON U.S. PROJECTS
Works Progress Administration Employing Largest
Number in Daviess County on Road, Street Work.

More than 600 people are employed in Owensboro and Daviess county on various Federal projects. These include streets and sewers in the city and roads over the county, along with sewing, tree planting and other work.

Heading the list in number employed in the Works Progress Administration under the supervision of Larry Depp, who also has charge of Hancock county. Associated with Mr. Depp in Daviess county are P. C. Younker and Douglas Williams, project engineers; William Greathouse, tool supervisor, and Eugene Fields, supervising timekeeper, who also supervises that particular work in Hancock and Henderson counties.

Among the projects under Mr. Depp are streets and sewers in Owensboro, which now are using 187 and 68 men respectively; the Smith road, 29 men; the Whitesville and Knottsville road, 38 men; the Green Brier and Red Hill road, 47 men; the Berry road, 32 men, and seven men engaged in sealing old coal mines.

[Note – The preceding two articles were the first references to Larry Depp found in the Owensboro newspapers. Subsequently there were hundreds of articles that contained his name.]



1940 Federal Census of Owensboro, Daviess County, KY, p.363A:

	relationship	age	birth place	occupation
Depp, O. Larry	head	35	KY	W.P.A. Area Engineer

(rents at 1603 Walnut Street; on 1 April 1935 resided in Monroe County, KY; highest grade of school completed – 1 year of college)

“	Violet G.	wife	33	KY	
					(highest grade of school completed – 4 years of high school)
“	O. Larry Jr.	son	8	KY	
“	Virginia G.	daughter	4	KY	
“	John C.	son	1	KY	
Willis,	Mary H.	maid	28	IN	



Owensboro Messenger, Owensboro, KY, Sunday, 22 April 1945, p.1C:

Our Men And Women In The Armed Forces

With The 836th Engineer Aviation Bn. in Luzon – Major Oren L. Depp, husband of Mrs. Violet G. Depp of 2018 Griffith Place, Owensboro, was recently awarded the Bronze Star Medal by command of Commander of the Sixth Army General Krueger. The citation was for meritorious achievement in connection with operations against the enemy on Los Negros Island, Admiralty Group.

At that time Major Depp, corps of Engineers, was executive officer of the 836th Engineer Aviation Battalion, an organization whose mission is building strategically located airdromes throughout the Southwest Pacific. Under his careful supervision the Construction of the Los Negros Airdrome was accomplished with maximum speed and efficiency.

Prior to his service with the U. S. Army, Major Depp was widely known for his work with the State Highway Department in Kentucky. Those under his direction in the Army say emphatically, "The Major, knows what is going on, and he gives the work all he has." Nick- named "The Kentucky Colonel," he is highly respected by his fellow officers as well as by the enlisted men of the organization.

The honor of the award of the Bronze Star Medal was eclipsed in the Major's estimation by the presentation of the Meritorious Service Unit Plaque to his battalion shortly afterwards. Since arriving overseas in July, 1943, the 836th Engineer Aviation Battalion has participated in the construction of seven vital airdromes.

The Major and Mrs. Depp have three children, Oren L. Jr., age 13, Virginia, age 9, and John C, age 6.



1950 Federal Census of Owensboro, Daviess County, KY, sheet 11:

Depp, O. Larry	head	45	KY	civil engineer – general contracting resides 2018 Griffith Place
“	Violet G.	wife	43	KY
“	Virginia	daughter	14	KY
“	John	son	11	KY
“	Robert	son	1	KY



Johnson, Depp & Quisenberry Building, 2625 Frederica St., Owensboro, KY, built in 1958.



Messenger-Inquirer, Owensboro, KY, Thursday, 13 September 1979, p.1C:

**Longtime local engineer
O.L. Depp Sr. dies at 74**



Owensboro engineer and businessman O.L. Depp Sr. died Wednesday at a Houston, Texas, hospital. He was 74.

During a career in Owensboro spanning more than 40 years, he served as a partner in Johnson, Depp and Quisenberry Consulting Engineers, and as president of O.L. Depp Contractor.

Depp was born on Jan. 28, 1905, in Barren County. He and his family moved to Owensboro in 1936. He served as assistant district engineer for the Works Progress Administration (WPA) in Daviess County until joining the U.S. Army in 1942.

During World War II, Depp served in the southwest Pacific with the 836th Combat Engineers Aviation Battalion.

He was discharged as a lieutenant colonel in 1945, and returned to Owensboro to help organize the Kentucky National Guard unit. He served as the Owensboro unit's commanding officer for a short time.

After leaving the service, he entered a partnership with J. Sam Johnson of Owensboro to form Johnson & Depp consulting engineers. He later served as vice president of Johnson, Depp and Quisenberry.

In 1948, he organized O.L. Depp Contractor, and served as its president until his death.

He was a former president of both the Kentucky Highway Contractors Association and the Kentucky Society of Professional Engineers. He was an elder in the First Christian Church in Owensboro.

Survivors include his wife, Violet Grimstead Depp; three sons, Larry Depp Jr. and Robert R. Depp, both of Owensboro, and John C. Depp of Miramar, Fla.; one daughter, Virginia Morrow of Houston, Texas; one brother, Dr. O.R. Depp of New Orleans, La. ; two sisters, Mrs. Earl Amos of Cave City and Mrs. Frank Wells of Glasgow; 12 grandchildren; and one great-grandchild.

Visitation will be at Haley-McGinnis Funeral home where arrangements are pending. The family asks that expressions of sympathy take the form of donations to the First Christian Church or the American Cancer Society.

[Note – Funeral services were on 15 September 1979 at the First Christian Church in Owensboro and burial was in the Owensboro Memorial Gardens.]



Oren Larry & Violet G. Depp



Grave markers of Oren Larry & Violet G. Depp
in Owensboro Memorial Gardens Cemetery



Messenger-Inquirer, Owensboro, KY, Monday, 10 January 2000, p.2B:



Violet Grinstead Depp, 92, of Owensboro died Saturday, Jan. 8, 2000, at Owensboro Mercy Health System. She was born in Barren County and was member of First Christian Church and Owensboro Woman's Club. Her husband, O.L Depp, died in 1979.

Survivors include three sons, Larry Depp Jr. of Frankfort John Depp of Hallandale, Fla., and Bob Depp of Owensboro; a daughter, Virginia Depp Morrow of Aspen, Colo.; 14 grandchildren; 19 great-grandchildren; a great-great-grandchild; and a brother, Chris Grinstead of Glasgow.

Services are at 11:30 a.m. Tuesday at First Christian Church in Owensboro. Burial will be in Owensboro Memorial Gardens. Visitation is from 4 to 8 p.m. today at Glenn Funeral Home in Owensboro and after 10 a.m. Tuesday at the church. Expressions of sympathy may take the form of donations to First Christian Church.



Courier-Journal, Louisville, KY, Friday, 22 March 1912, p.3:

Prof. Oren Depp.

Glasgow, Ky., March 20. – (Special.) – Prof. Oren Depp, 37, died at his country home near Glasgow this morning of pneumonia. Mr. Depp was a student from boyhood and was a teacher in the public schools when barely old enough to hold a certificate. His work in Barren county has been of great advantage to the community, and his name recently had been spoken of as a candidate for Superintendent of Public Instruction. He was the youngest son of John Depp, former Representative of Barren county in the Kentucky Legislature. He is survived by his wife and five children, together with his father and several sisters, among whom is Miss Nettie Depp, principal of the Scottsville graded school.

Messenger-Inquirer, Owensboro, KY, Wednesday, 5 December 1962, p.10A:

MRS. OREN R. DEPP

Word has been received here by O. L. Depp of the death of his mother, Mrs. Oren R. Depp, 82, of Glasgow, who died Monday night after a long illness.

She was a member of the First Christian Church. She school for 43 years, during which time she spent a number of years teaching in the Owensboro school system.

Surviving besides Mr. Depp are one other son, Dr. Oren R. Depp of New Orleans, La.; two daughters, Mrs. Earl Amos of Cave City and Mrs. Frank R. Wells of Glasgow; 17 grandchildren, and 27 great-grandchildren.

Funeral services will be held at 2 p.m. today at the First Christian Church in Glasgow. Burial will be Glasgow.

The body is at Crowe's Funeral Home, Glasgow.



John Christopher Depp, Sr., son of Oren Larry Depp & Violet Mattie Grinstead, was born on 20 August 1938 at the Owensboro - Daviess County Hospital. The following birth announcement was published in the Owensboro Messenger, Owensboro, KY, Tuesday, 23 August 1938, p.10:

Local Laconics

- Tapscott's for flowers.
- Andy's Cleaners—Phone 831.
- Ph. 2076-W. Mrs. Boyle, Glads.
- Born, to Mr. and Mrs. Elgin Miller, 931 Breckenridge street, August 21, a daughter, Patsy Ann.
- Born, to Mr. and Mrs. Joseph F. Crowe, Stanley, Route 1, August 21, a son, George B.
- Born, to Mr. and Mrs. Larry Depp, 536 Cedar street, at the city hospital, August 20, a son.



Owensboro Senior High School Yearbooks, 1953 & 1956:



John Depp – Freshman (left) & Senior (right)

John Christopher Depp, Sr. graduated from Owensboro Senior High School on 28 May 1956. He married Mrs. Betty Sue (Wells) Dale on 16 February 1960 at Jellico, Campbell County, TN. Betty, daughter of Walter Everett Wells & Bessie Irene Whitaker, was born 1 January 1935 in Floyd County, KY. The following is a copy of John & Betty's marriage license:

MARRIAGE RECORD
CAMPBELL COUNTY, TENNESSEE

No. 13691

John Christopher Nepp and Betty Sue Hale

APPLICATION FOR MARRIAGE LICENSE
(As Required by Chapter 81, House Bill 696, Acts of 1937)

To C. E. Hatmaker, Date of Application Feb. 16, 1960
Clerk of the County Court of Campbell County, Tennessee.

NAME	Female's Parents, Guardian, or Next of Kin (GIVE NAMES OF BOTH PARENTS IF LIVING)	Relation to Female
Male <u>John Christopher Nepp</u> Age <u>21</u> (APPLICANT) Address <u>Lexington, Ky.</u>		
Female <u>Betty Sue Hale</u> Age <u>25</u> (TO BE MARRIED) Address <u>Lexington, Ky.</u>		

The undersigned John Christopher Nepp, being duly sworn, makes oath that the statements made in the foregoing application are true, and that he sign(s) and makes oath hereto as and for an application for a Marriage License as above set out.

John Christopher Nepp
(Signature of Applicant)

(Name) (Relationship)

Sworn to and subscribed before me this 16 day of Feb., 1960
Notice mailed _____ day of _____, 19____
C. E. Hatmaker, Clerk.
_____, Deputy Clerk.

It appearing that good cause exists, the three-day period and/or age limit is hereby suspended and the Clerk of the County Court authorizes to issue Marriage License to the above-named parties.
This _____ day of _____, 19____, County Judge.

STATE OF TENNESSEE, CAMPBELL COUNTY.

To any Regular Minister of the Gospel of any denomination or Jewish Rabbi more than eighteen (18) years of age having the care of souls, Justice of the Peace of said County, Judge or Chancellor, the Governor, the Speaker of the State Senate or the Speaker of the House of Representatives—GREETING:

You or either of you are hereby authorized to solemnize the Rite of Matrimony between

John Christopher Nepp
and Betty Sue Hale

according to the Statutes of the State of Tennessee in such case made and provided. Provided always, that the license be issued under the hand of the Clerk of the County Court of the County where the female resides or be issued by the Clerk of the County Court of the County where the marriage is solemnized; otherwise these shall be null and void, and shall not be accounted any license or authority to you or either of you, for the purpose aforesaid, more than though the same had never been prayed or granted, etc.

Given at the Clerk's Office of said County, this 16 day of Feb., 1960
C. E. Hatmaker, County Court Clerk.
R. B. Grinstead, D. C.

Return.

I solemnized the Rite of Matrimony between the within named parties on the 16 day of Feb., 1960
at Jellie, Campbell County, Tennessee.

Edgar H. Douglas
Title J.P.
Address Jellie, Tennessee
Returned on the 18 day of February, 1960
C. E. Hatmaker, Clerk.
_____, Deputy Clerk.



Messenger-Inquirer, Owensboro, KY, Wednesday, 9 March 1960, p.2B:



WELLS-DEPP WEDDING TAKES PLACE

Miss Betty Sue Wells, daughter of Mrs. Everett Wells, Prestonsburg, Ky., and John Depp, son of Mr. and Mrs. O. L Depp, Owensboro, were married Feb. 16 in Jellico, Tenn. Mr. Depp is a junior at the University of Kentucky. The couple will make their home at Cooperstown, Lexington.



At the time of the marriage of John C. & Betty Depp he was a junior at the University of Kentucky and residing in Lexington, KY. On 5 June 1961 he graduated from the University of Kentucky School of Engineering. Upon his graduation he moved back to Owensboro.

Owensboro, KY City Directories

1960	John C. Depp not listed
1962 p.128	Depp, John C. (Betty) 518 Stockton; civil engineer O.L. Depp General Contractor
1963 p.131	Depp, John C. (Betty) 518 Stockton; civil engineer O.L. Depp Construction
1965 p.144	Depp, John C. (Betty) 518 Stockton Drive; agent State Ins. Co. of KY
1969	John C. Depp not listed
1971 & subsequently	John C. Depp not listed



Messenger-Inquirer, Owensboro, KY, Tuesday, 20 January 1970, p.5A:

Petition In Bankruptcy

John Christopher Depp, engineer with City of Owensboro, and his wife, Betty Sue Depp of 3837 Lewis Lane, Owensboro, each filed separate petitions in bankruptcy in the office of the federal court clerk here. In their petitions they each listed liabilities of \$17,806.55, assets of \$5,267.50 and ask \$5,962.50 exemptions.



John Christopher ('Johnny') Depp, Jr. was born on June 9, 1963, in Owensboro, Kentucky at the Our Lady of Mercy Hospital. He was the youngest of four children of waitress Betty Sue

Depp (née Wells) and civil engineer John Christopher Depp, Sr. At the time of his birth the family was residing at 518 Stockton Dr. in Owensboro.



518 Stockton Drive, Owensboro – home of Johnny Depp, 1963-1965

The following birth announcement of Johnny Depp appeared in the Messenger-Inquirer, Owensboro, KY (11 June 1963, p.5A – at bottom of New Arrivals list):

● New Arrivals

Our Lady of Mercy Hospital:
—a son to Mr. and Mrs. Randall Roby, Route 2, Reynolds Station, June 7.
—a daughter, to Mr. and Mrs. Anthony Kaelin, 3731 Jefferson St., June 7.
—a son to Mr. and Mrs. Sam L. Rhodes, 208 Warwick, June 7.
—a son to Mr. and Mrs. Aubry Hagan, Whitesville, June 8.
—a son to Mr. and Mrs. Sam McCoy, 802 E. 3rd St., June 8.
—a son to Mr. and Mrs. Joseph Mattingly, 1427 Locust St., June 8.
—a son to Mr. and Mrs. Richard Weafer, 1634 Parrish Ave., June 9.
—a daughter to Mr. and Mrs. Paul Trogden, 1812 Poindexter, June 9.
—a son to Mr. and Mrs. Ralph Mapes, 1537 E. 20th St., June 9.
—a son to Mr. and Mrs. John Depp, 518 Stockton Drive, June 9.



Our Lady of Mercy Hospital, 1006 Ford Avenue, Owensboro, KY opened in 1948, closed in 1996 and the building was razed in May 1997



Kentucky Birth Index, 1911-1999:

Birth records of Johnny Depp, his parents, 3 siblings, 2 uncles & 1 aunt

	<u>born</u>	<u>mother</u>	<u>county</u>
Oren L. Depp	3 Aug 1931	Mattie Grinstead	Calloway
Virginia G. Dipp [sic]	26 May 1935	Violet Grinstead	Barren
John C. Depp	20Aug 1938	Mattie Grinstead	Daviess
Robert R. Depp	16 Mar 1949	Mattie Grinstead	Daviess
Danny P. Depp	14 Nov 1953	Betty Wells	Johnson
Deborah J. Depp	10 May 1956	Betty Wells	Johnson
Elisa C. Depp	21 Dec 1960	Betty Wells	Fayette
John Christopher Depp II	9 Jun 1963	Betty Wells	Daviess
Bettie S. Wells	1 Jan 1935	Bessie Whitaker	Floyd



In September 1965 John C. Depp, Sr. sold his home on Stockton Drive in Owensboro and moved his family to Frankfort, KY, where he was associated with Tecon-Brighton Engineering. On 10 April 1967 he was hired as city engineer of Frankfort and on 15 June 1968 he was appointed city manager of Frankfort. After serving 13 months in that position he resigned on 3 September 1969 (see articles – “Commission Hires John Depp As Full-Time City Engineer”, The State Journal, Frankfort, KY, Tuesday, 11 April 1967, p.1, “Mrs. Depp Honored”, The State Journal, Frankfort, KY, Friday, 19 May 1967, p.3 , “Depp Named City Manager”, The State Journal, Frankfort, KY, Sunday, 4 August 1968, p.1, “Former Frankfort city manager is dad of rising actor Johnny Depp”, The State Journal, Frankfort, KY, Sunday, 10 March 1991, p.1A).

Johnny Depp’s family moved to Miramar, Florida in March 1971. His father in that month was hired by the city of Miramar to act as director of the building, sanitation, water and sewer, and public works departments and as zoning administrator; he left the position in March 1980. He subsequently was employed as city engineer by the city of Hallandale Beach, FL.



Miami Herald, Miami, FL, Monday, 11 September 1972, p.1D:



Miramar Building Director John C. Depp



Johnny Depp's parents divorced on 8 June 1981 in Broward County, FL. His father married Marsha Marie Johnson on 26 September 1981 Broward County, FL and they were divorced 3 June 1983 in Broward County, FL. Johnny's father married June Watts on 17 July 1983 in Broward County, FL. Johnny Depp's mother married first a Dale, during 1952-1959. Betty also married Robert Vincent Burt on 12 June 1981 in Broward County, FL (they were divorced 24 November 1982 in Broward County, FL); Robert William Palmer, in January 1983 in Rahway, Union County, NJ (they were divorced 2 February 1987 in Broward County, FL); Robert William Haley, 2 February 1987 in Broward County, FL (they were divorced 28 July 1987 Broward County, FL).



Find A Grave.com picture and obituary of Johnny Depp's mother:



Betty Sue Wels Depp Palmer died 20 May 2016 Los Angeles, CA.

Betty Sue was born January 1, 1935 in Floyd County, Kentucky, the daughter of the late Walter Everett and Bessie Whitaker Wells.

In addition to her parents, Betty was preceded in death by her sister, Jacqueline Sammons in 1995, her brother, Billy Paul Wells in 2007, and her fourth husband, Robert "Bob" Palmer in 2000.

Surviving her are her children from her first marriage: Daniel P. "Danny" Depp, of California, and Deborah Johniene "Debbie" Depp, of Kentucky. Betty is also survived by her two children from her second marriage: Elisa Christie Depp-Dembrowski, and John Christopher "Johnny" Depp II of California.

Eight grandchildren, one great grandchild, one brother (Rayburn), and one sister (Peggy Jean) also survive Betty.

A private memorial service for Betty was held by her family on June 29th in Los Angeles, California.



Messenger-Inquirer, Owensboro, KY, Sunday, 1 December 2002, p.6D:

Real Estate Transfers

2018 Griffith Place W., Robert R. Depp and Larry Depp Jr., co-executors of the Violet G. Depp estate; Lena Depp; Robert E. Depp; Sheila Depp; Virginia D. Morrow; Darryl Morrow; John C. Depp Sr.; and June Depp, to John C. Depp Sr. and John C. Depp II for \$115,000.

[Note – Heirs sold their interest in the former home of Oren Larry Depp (1905-1979) & Violet M. (Grinstead) Depp (1907-2000), at 2018 Griffith Place West, in Owensboro. In the preceding newspaper notice the heirs listed and their relationship to Oren Larry & Violet are – Robert Richard Depp (son), Oren Larry Depp, Jr. (son), Lena Depp (daughter-in-law, Lena Mae Harrod, wife of Larry Depp, Jr.), Robert E. Depp, Sheila Depp (daughter-in-law, Sheila Kaye Taylor, wife of Robert R. Depp), Virginia D. Morrow (daughter, Virginia Grinstead Depp, wife of Darrel Morrow), Darrell Clay Morrow (son-in-law, husband of Virginia Depp), John Christopher Depp, Sr. (son), June Depp (daughter-in-law, June Watts, wife of John C. Depp, Sr.), and John Christopher Depp, II (grandson). The last named is Johnny Depp.]



2018 Griffith Place West, Owensboro, KY
Former home of Oren Larry & Violet Depp, grandparents of Johnny Depp